



# OUR PROPOSALS

A NEW CAMBRIDGE AIR BASE FOR  
EAST ANGLIAN AIR AMBULANCE

YOUR OPINION MATTERS TO US

*Together we save lives*



# WELCOME

Thank you for taking the time to learn more about our plans to relocate our life-saving Cambridge-based service from Cambridge City Airport to a new site located on Balsham Road in Fulbourn.





# ABOUT: EAST ANGLIAN AIR AMBULANCE



East Anglian Air Ambulance (EAAA) is a charity providing advanced critical care 24 hours a day, 365 days a year to the most seriously ill and injured people in Bedfordshire, Cambridgeshire, Norfolk and Suffolk and beyond, by air and road.

Fuelled by supporter donations, we partner the ambulance service across the most serious of incidents including road traffic collisions, cardiac arrests and other medical emergencies. When someone needs us, it's usually the worst moment of their life, and their family's. That's why our specialist doctors, critical care paramedics and pilots bring the advanced skills, equipment and medicine directly to the patient's side in the fastest time possible, providing care normally only found in a specialist emergency department.

The equipment carried by our helicopters and critical care cars enables enhanced care at the incident scene – when the patient needs it most – such as blood transfusions, advanced pain relief, sedation and anaesthesia, and surgical interventions. This, combined with quick onward transfer to the most appropriate hospital, gives every patient the best possible chance of surviving and recovering a life-threatening emergency.



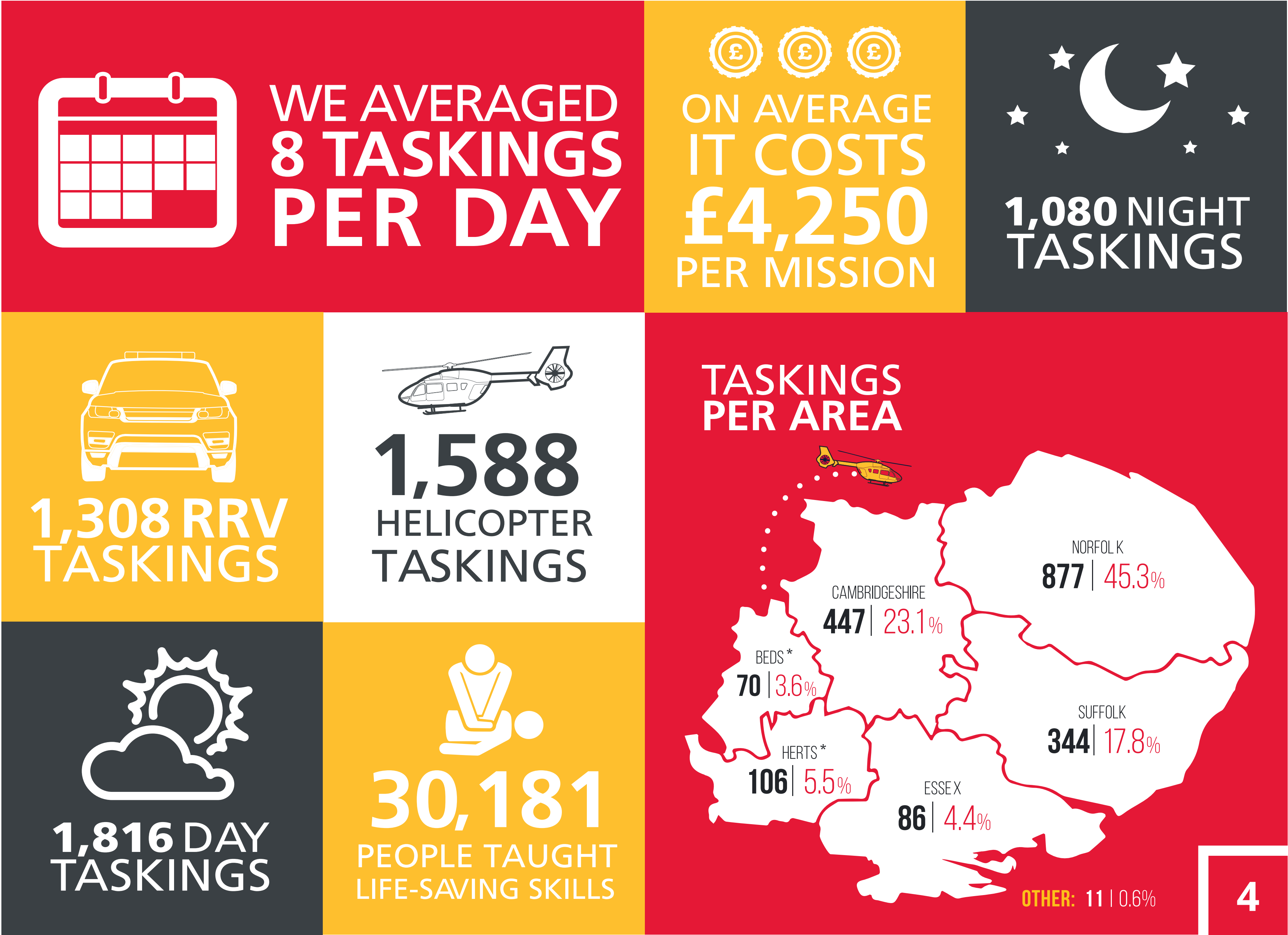
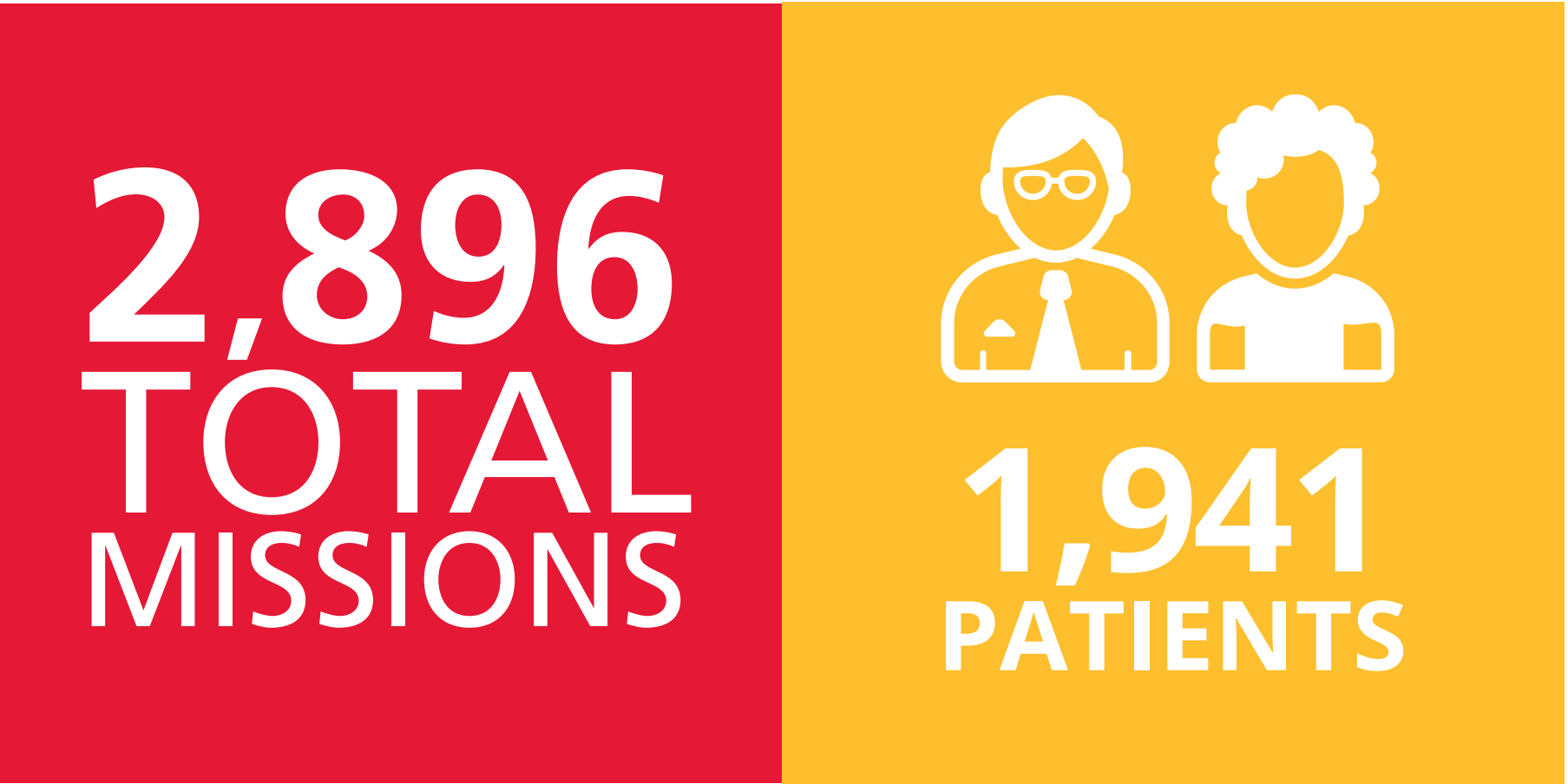
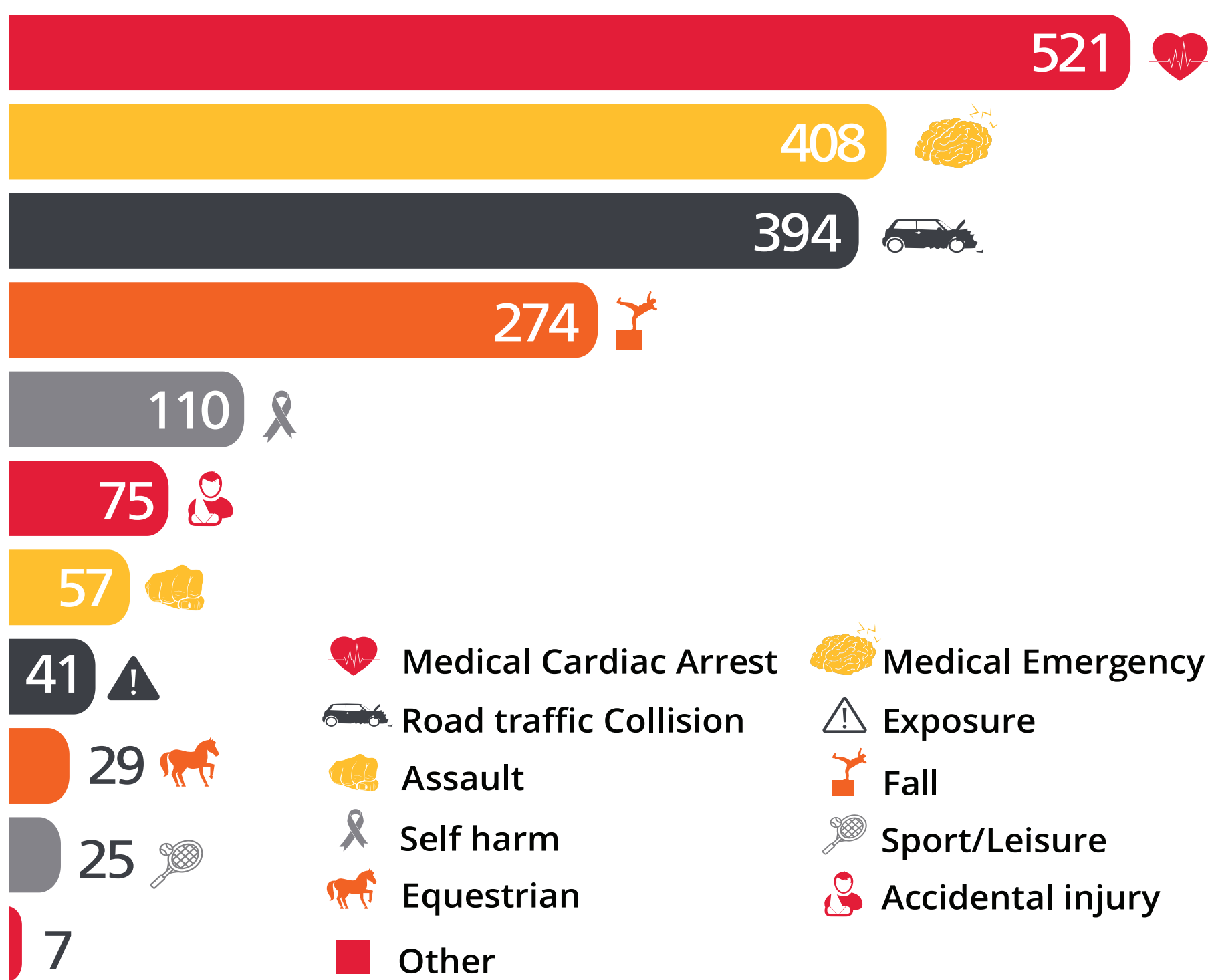


# 2024 STATS

(Combined figures for Norwich and Cambridge)



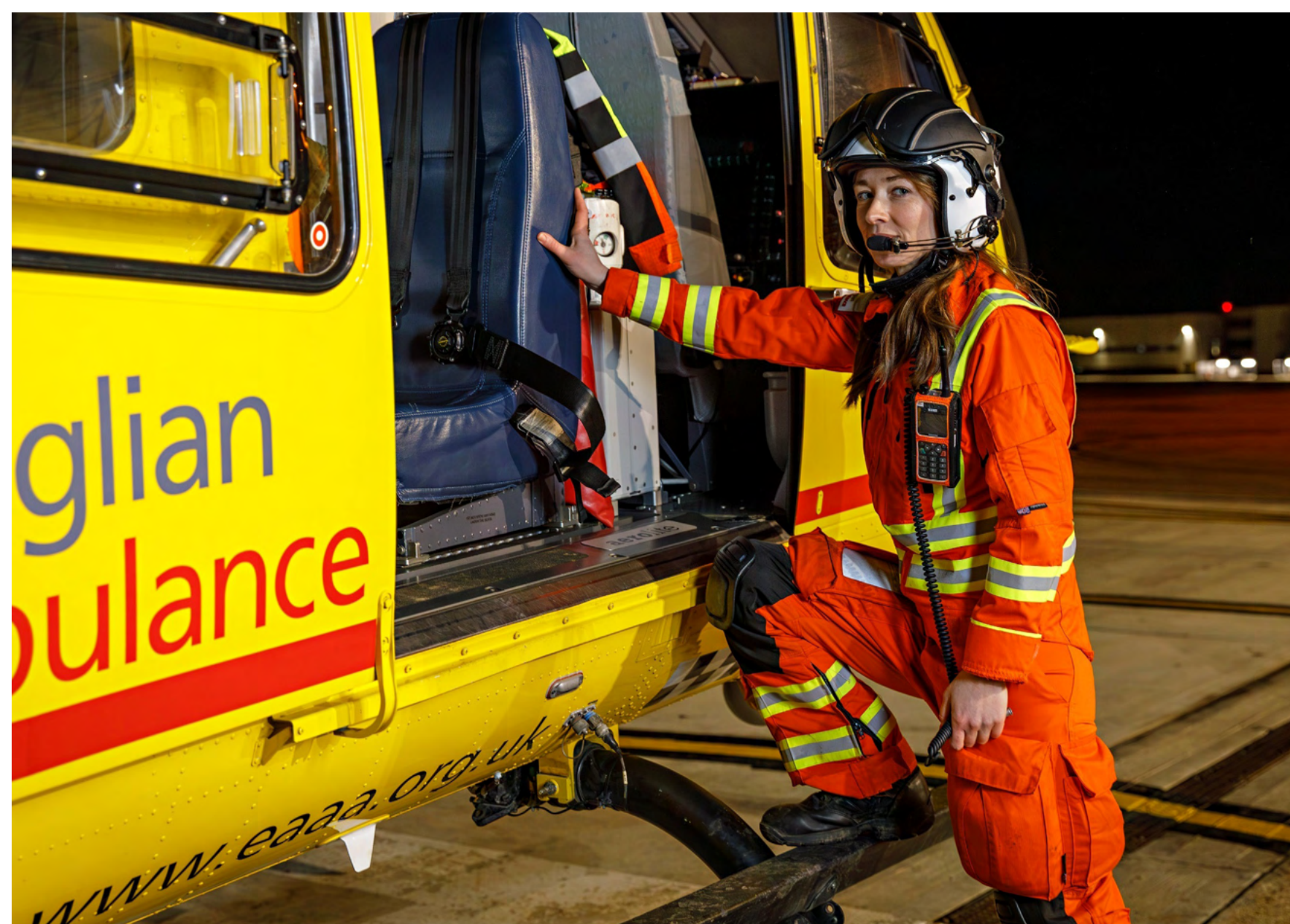
## OUR PATIENTS IN 2024





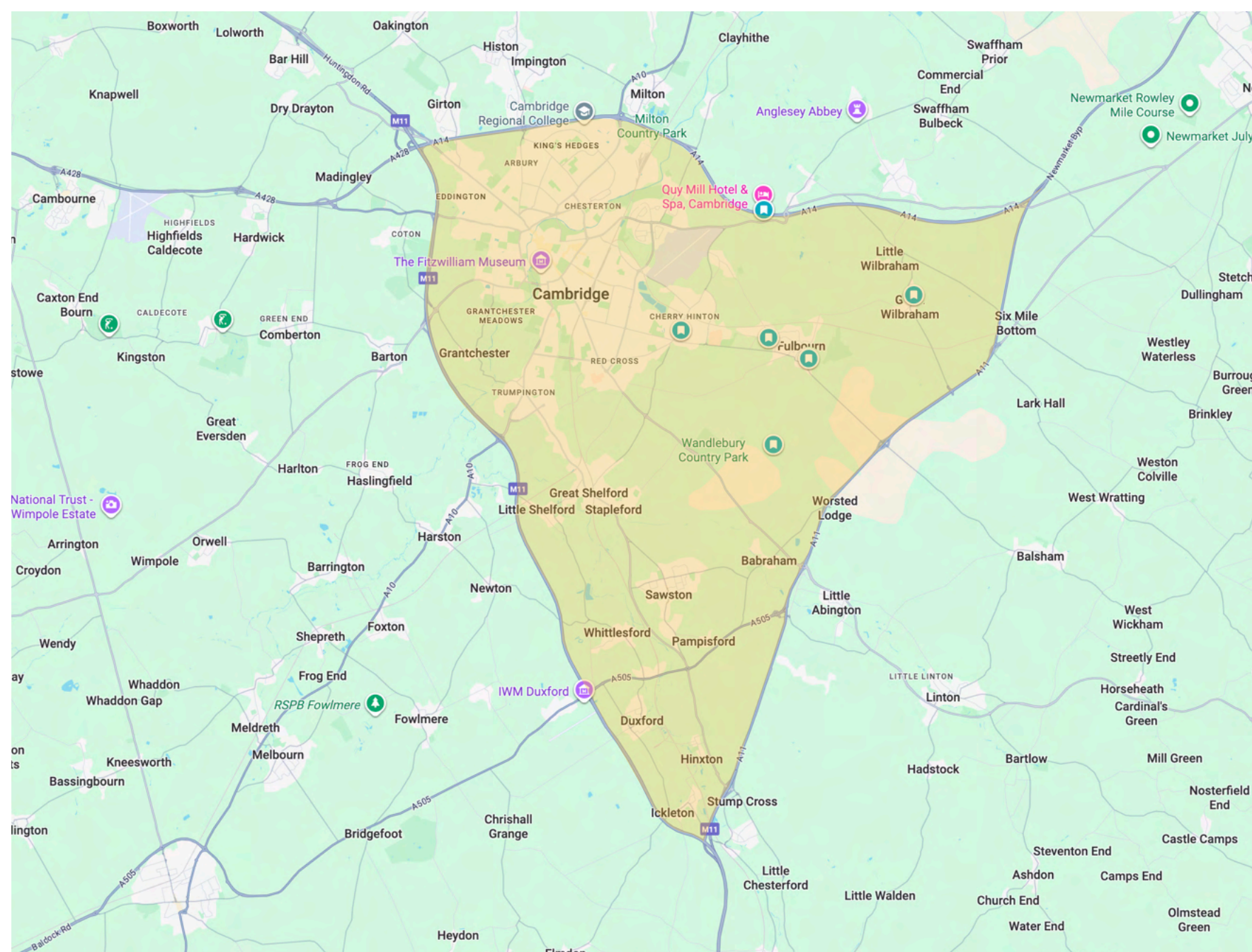
# THE NEED TO RELOCATE

For the last 18 years, EAAA and the owners of Cambridge City Airport, Marshall, have ensured that the helicopter and crew can swiftly attend critical care emergencies across the region, and we are incredibly grateful to Marshall for their support during this time. However, with the planned closure of the airport, which is currently scheduled for 2030, we must urgently relocate our Cambridge-based operation to be able to continue providing our vital service to the people of Cambridgeshire, Suffolk, Bedfordshire and Norfolk.

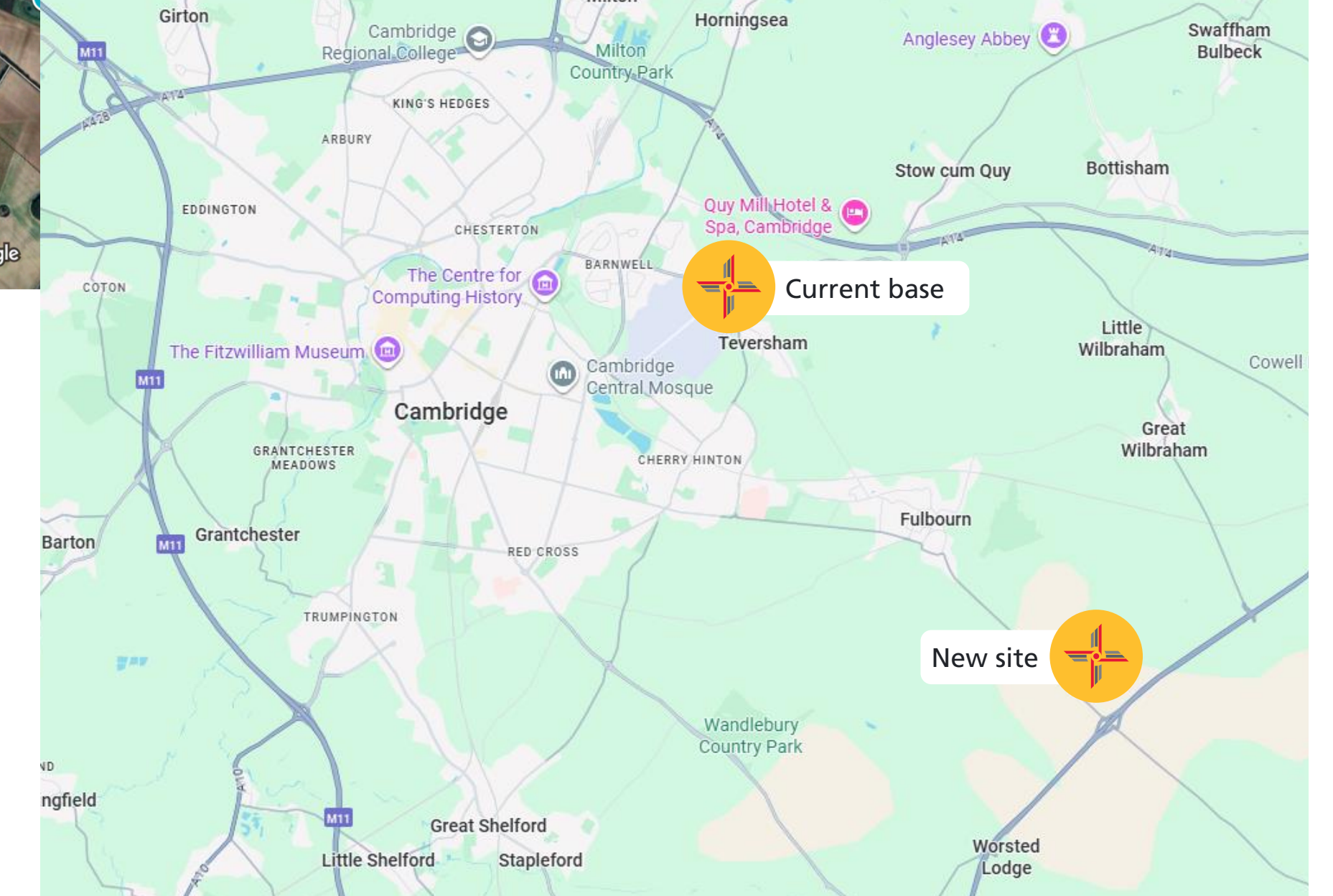
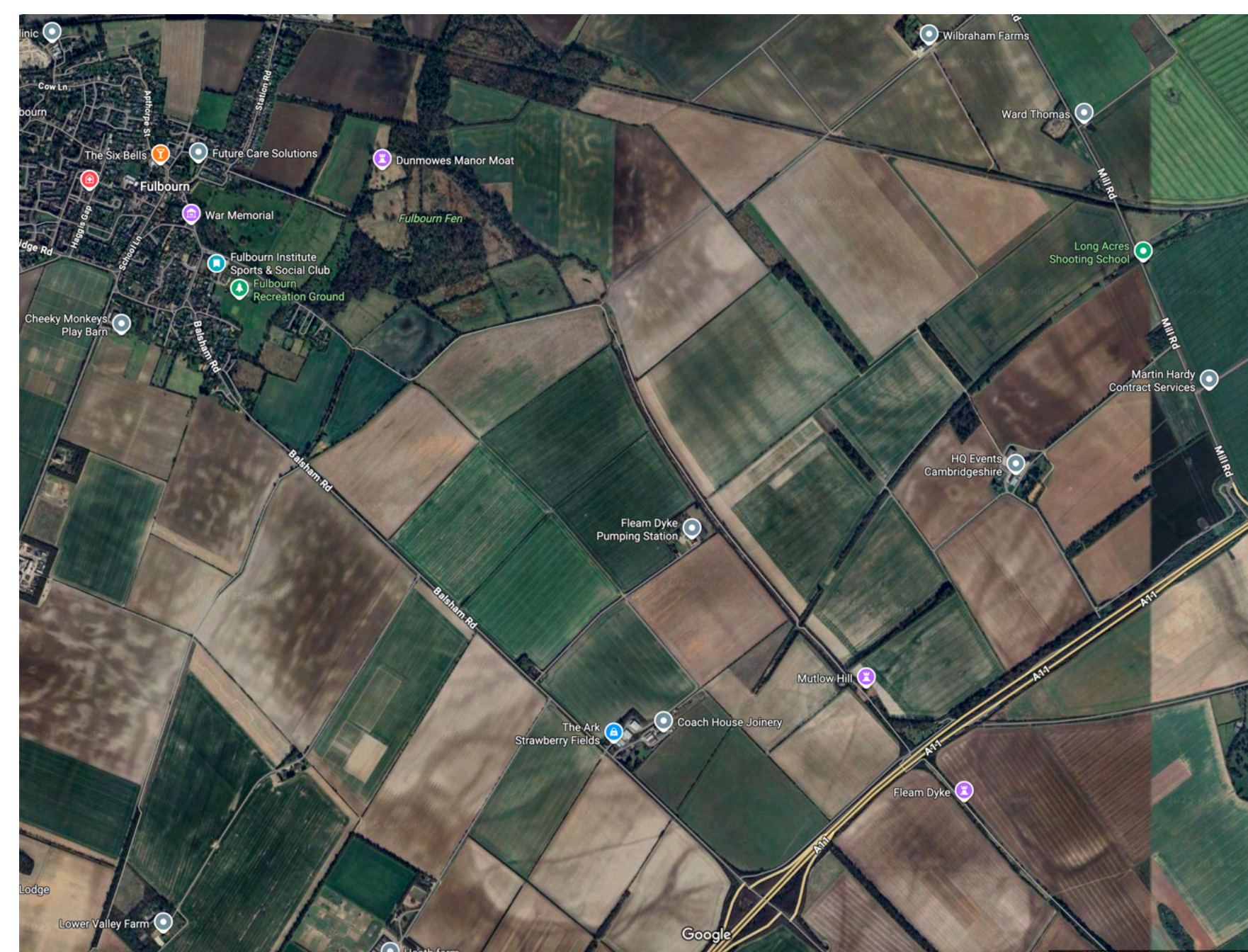




# OUR SEARCH AND THE SITE



Following a thorough regional review of patient needs and existing critical care and helicopter emergency medical service resources, the charity's operations team concluded that Cambridgeshire remains the optimal location for our operation, specifically the area immediately surrounding Cambridge. After reviewing dozens of sites, the team were able to shortlist 22 candidate sites in and around the triangle of major roads surrounding the city. The list was then narrowed down based on operational considerations such as drive and fly population coverage, aviation compatibility, land availability, land costs, and existing infrastructure on the site.



Following this extensive research and assessment, land at Shardelowes Farm on Balsham Road in Fulbourn was identified as the most suitable option available to the charity. The site is located 2km southeast of Fulbourn village and extends to approximately 10.35 acres.



# THE SITE



## Operational effectiveness

The site is strategically located within 700 meters of the A11, a major arterial road that provides rapid access to the south, north and east. Additionally, Balsham Road offers direct connectivity to Cambridge. Response times are comparable to our current Cambridge base in terms of drive and flight times and associated population coverage. A 10-minute flight time from this location can reach a population of 1,206,000 and a 20-minute drive time can reach a population of 276,000.

## Aviation compatibility

The site has been audited by Babcock, our aviation partner, and is highly compatible with aviation. For the Airbus H145 D3 helicopter, which we operate, the site can accommodate a Final Approach and Take-Off area (FATO) which allows us the ability to perform a class one clear area departure, enabling safer flying. It's also been assessed as being highly compatible with Point-nSpace (PinS)\* approach, which would allow us to utilise GPS-based navigation for precise landing and take-off in challenging weather conditions.

## Futureproofing

The site is approximately 10 acres, which will allow us to build a new base with our current designs and also give us the ability to futureproof our operation, ensuring that appropriate facilities exist to enable any service expansion that can be foreseen.

While we are not anticipating any immediate expansion, and our initial focus will be on the continuation of our existing Cambridge-based service, which operates 7am – 7pm by air and 7pm – 7am by road, we are always looking for ways to use our resources to serve the community as best we can.

For example, flying 24/7 is not an immediate plan but we will make sure that the infrastructure exists to support that step, should it become a need. As our recent extension of our flying hours to 24/7 from Norwich, we would first establish, by thoroughly examining the data, that the need exists, and secondly that we have the resources and funding to meet it on a long-term basis.



# OUR VISION



## Safeguarding our service

A new base will safeguard the continuity of our life-saving service, ensuring we can continue to be there for the 3.2 million people across Cambridgeshire, Suffolk, Bedfordshire and Norfolk who could need urgent critical care from the air ambulance.



## A community hub for everyone

The relocation also offers us an opportunity to improve our community engagement in Cambridge and the surrounding areas significantly. Our current base, which is on an active airfield, means there are challenges with us being able to open our doors to the community. Operating from our own site will allow us to welcome visitors, hold open days, host base visits and deliver more public engagement than we have previously been able to.



## Crew welfare

EAAA crews attend the very worst medical and trauma emergencies in East Anglia and are regularly exposed to life and death situations. The base will enable us to provide improved crew welfare facilities, including a gym to encourage physical activity, as well as confidential spaces for debriefing and peer discussion.



## Education and training facilities

Our training and educational facilities are vital to our service. Improved facilities will ensure we can deliver advanced training and educational programmes for our future doctors and paramedics, as well as maintain the high levels of skill in our current cohort of clinicians.



## Sustainability

Our proposals have been developed with sustainability central to our decision making.

Working with expert ecologists and landscape architects throughout the design and build, we will be delivering a biodiversity net gain on the proposed site, with strong ecological credentials.

The site will feature, amongst other things, electric vehicle charging points, solar panels, cycle parking, sustainable drainage systems and high-efficiency electrical and water systems.

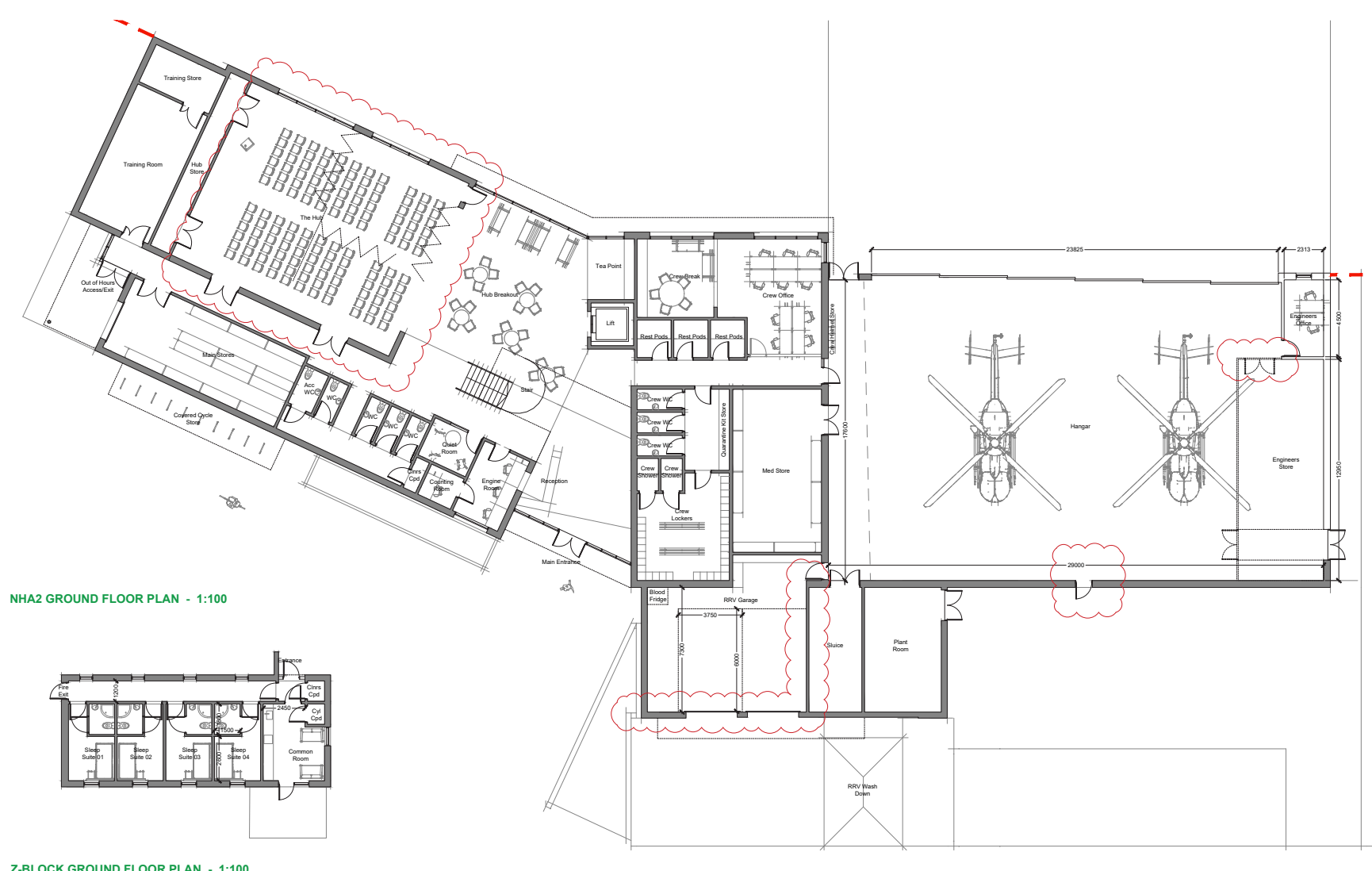


# OUR PROPOSALS

## A purpose-built, multi-role facility

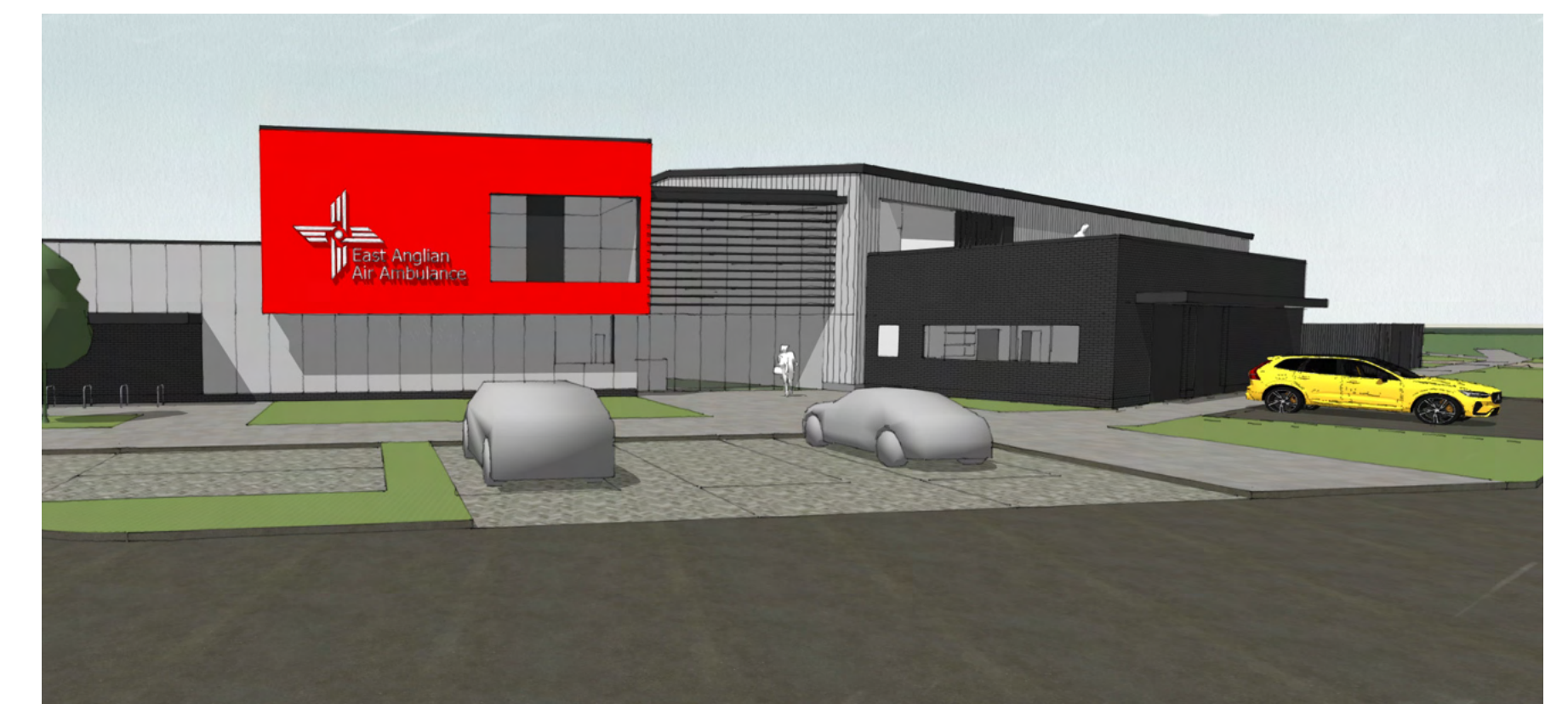
The new facility will be thoughtfully designed to support our life-saving work. The area will cover the development of an operational base, a hangar, a helipad and an area for Final Approach and Take-off (FATO), as well as:

- Dedicated offices, storage and break out spaces for our charity that support the operation, such as engineering, the operational support team and backoffice functions
- Facilities which will ensure we can deliver the required advanced training and educational programmes for our future doctors and paramedics
- Internal and external spaces which will support our patient aftercare services



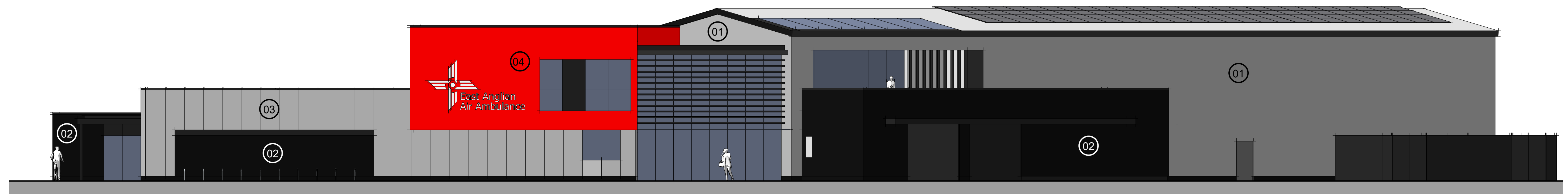


# OUR PROPOSALS





# OUR PROPOSALS

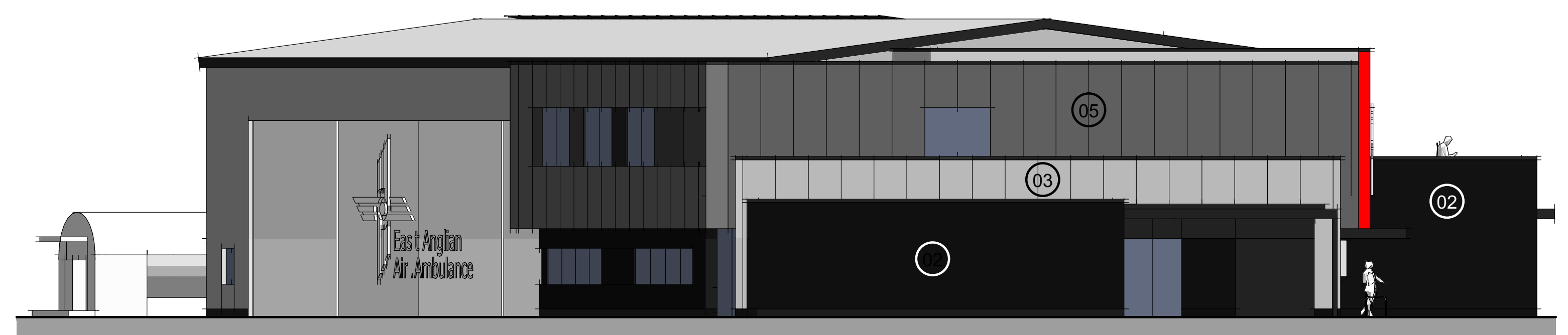
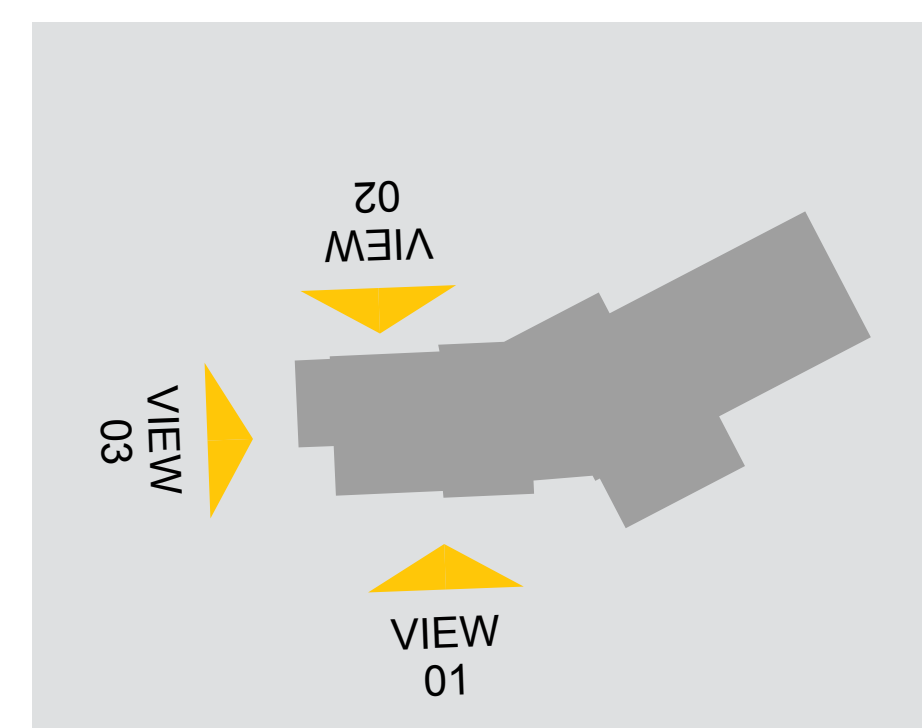


**View 01** | Reception and Hub - 1:100



**View 02** | Training Space and Hub - 1:100

We have been expertly advised on specialist areas including ecology, archaeology, environmental ground conditions, flood and drainage and sustainability. These findings have informed the design of the facility and will form part of the formal planning application.



**View 03** | Training Space, Office and Hub - 1:100



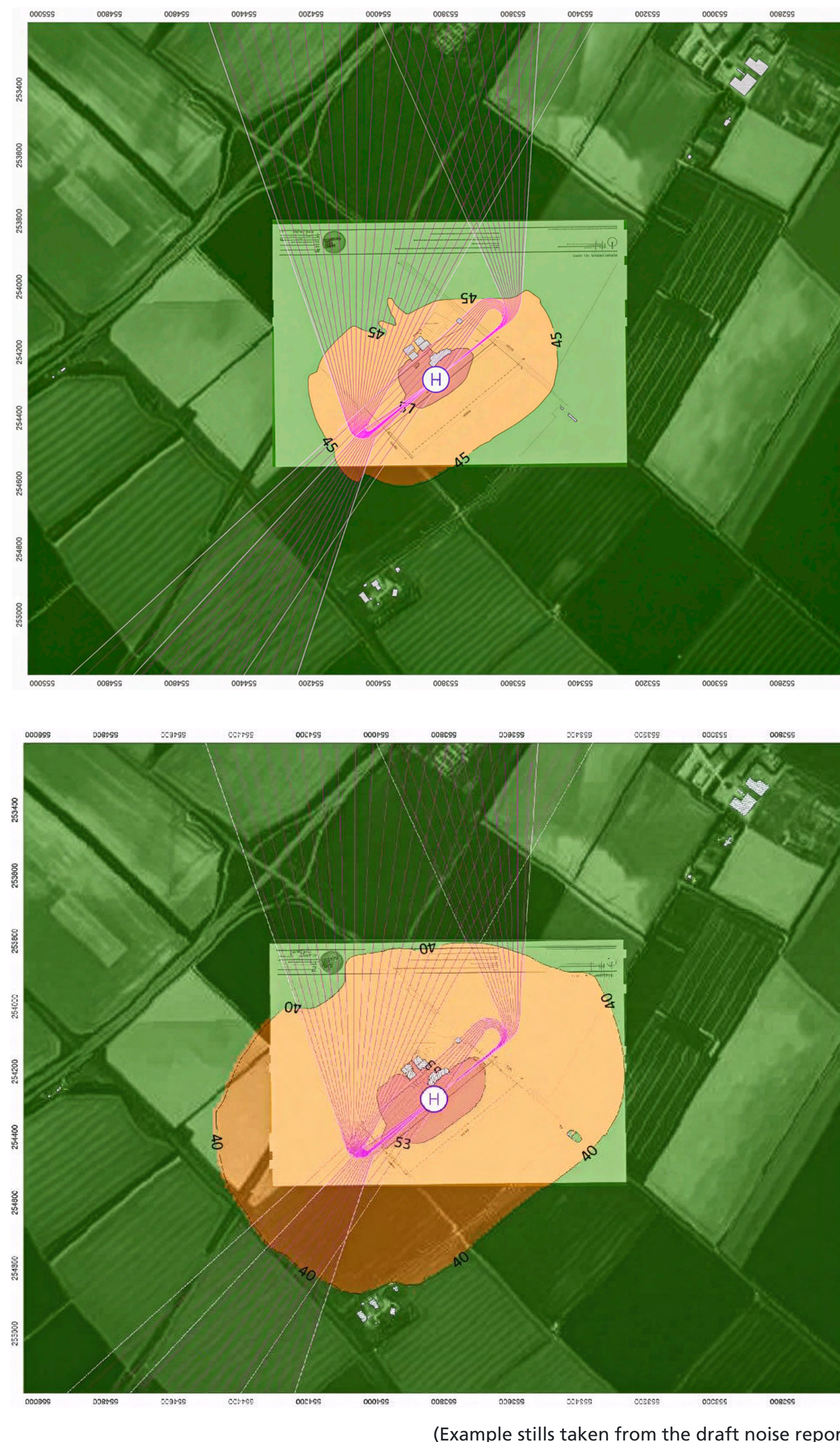
# NOISE AND VISUAL IMPACT

## Minimising noise impact

We are putting in place a range of mitigation measures to minimise disturbance to the site's neighbours, including conducting noise surveys and establishing designated flight routes to minimise the impact on housing. A report has been created by capturing the sound of our helicopter carrying out manoeuvres and approaches at Cambridge City Airport and benchmarking this against the ambient noise at the site. Using the results, the charity's aviation team have created flight paths, and site layout and features that will minimise the impact of noise on local residents, particularly in the hours of darkness. The charity will initially be operational 7am – 7pm by air and 7pm – 7am by road and the findings have shown that noise from the helicopter falls below statutory limits in the day, and below statutory limits for all but one house at night.

## Visual impact

The existing buildings on the site and the adjacent buildings next to the site have a very similar profile to our proposed plans and would in fact be lower than the current buildings.





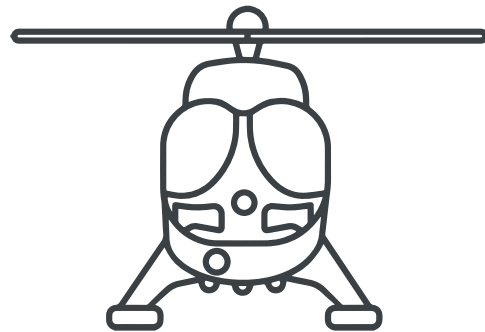
# BENEFITS



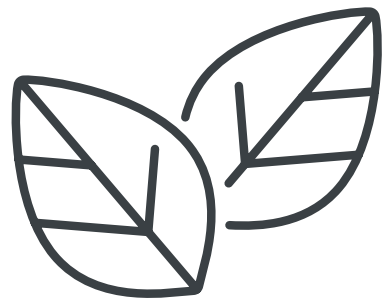
Continuity of your  
life-saving service



A community hub



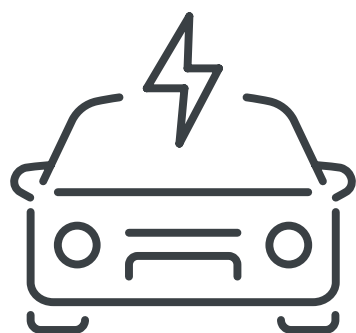
Similar response times to our  
current base



Delivering landscaping and  
biodiversity improvements



Direct access to the A11  
by road



Delivering charging  
points for the electric  
vehicles at site



Direct access to Cambridge  
City Centre via Balsham Road  
by road



Cycle parking



Bringing our Cambridge  
teams together under  
one roof to support the  
operation



# HAVE YOUR SAY



Thank you for viewing our proposals to relocate our life-saving service to Balsham Road, Fulbourn. The move depends on securing planning permission, and we will be applying to South Cambridgeshire District Council in due course.

We are inviting comments and feedback on the draft proposals from the local community and are keen to hear your views, and are happy to address any queries or comments you may have.



## You can comment in the following ways:

- By filling in the form at today's event and posting in the feedback box
- By visiting our website: [eaaa.org.uk/communityconsultation](http://eaaa.org.uk/communityconsultation) and completing the online form
- By emailing us: [feedback@eaaa.org.uk](mailto:feedback@eaaa.org.uk)
- By calling: 03450 669 999
- By post: Freepost, EAAA. No stamp is required.

Please return comments to us by **17 September 2025**.

Once the planning application has been submitted, there will be a further period of consultation where further comments can be made directly to South Cambridgeshire District Council.

For anyone wishing to support this application, please contact [feedback@eaaa.org.uk](mailto:feedback@eaaa.org.uk) and leave your details if you would like to endorse our plans.